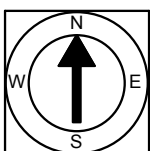


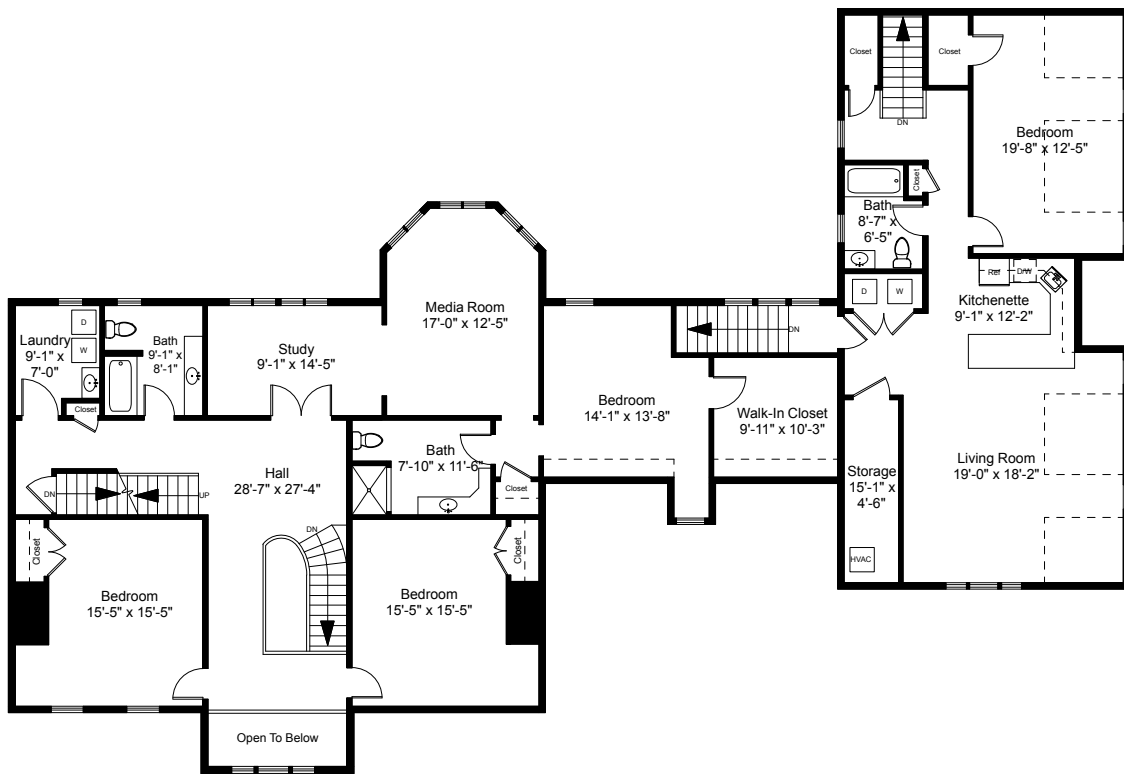
1



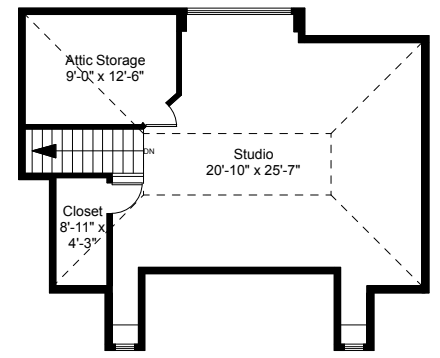
Note: Dimensions are not guaranteed and are provided for informational purposes only. Individual room dimensions are not used to calculate overall square footage.

NATIONAL FLOOR PLANS & PHOTOGRAPHY
(800) 328-0217

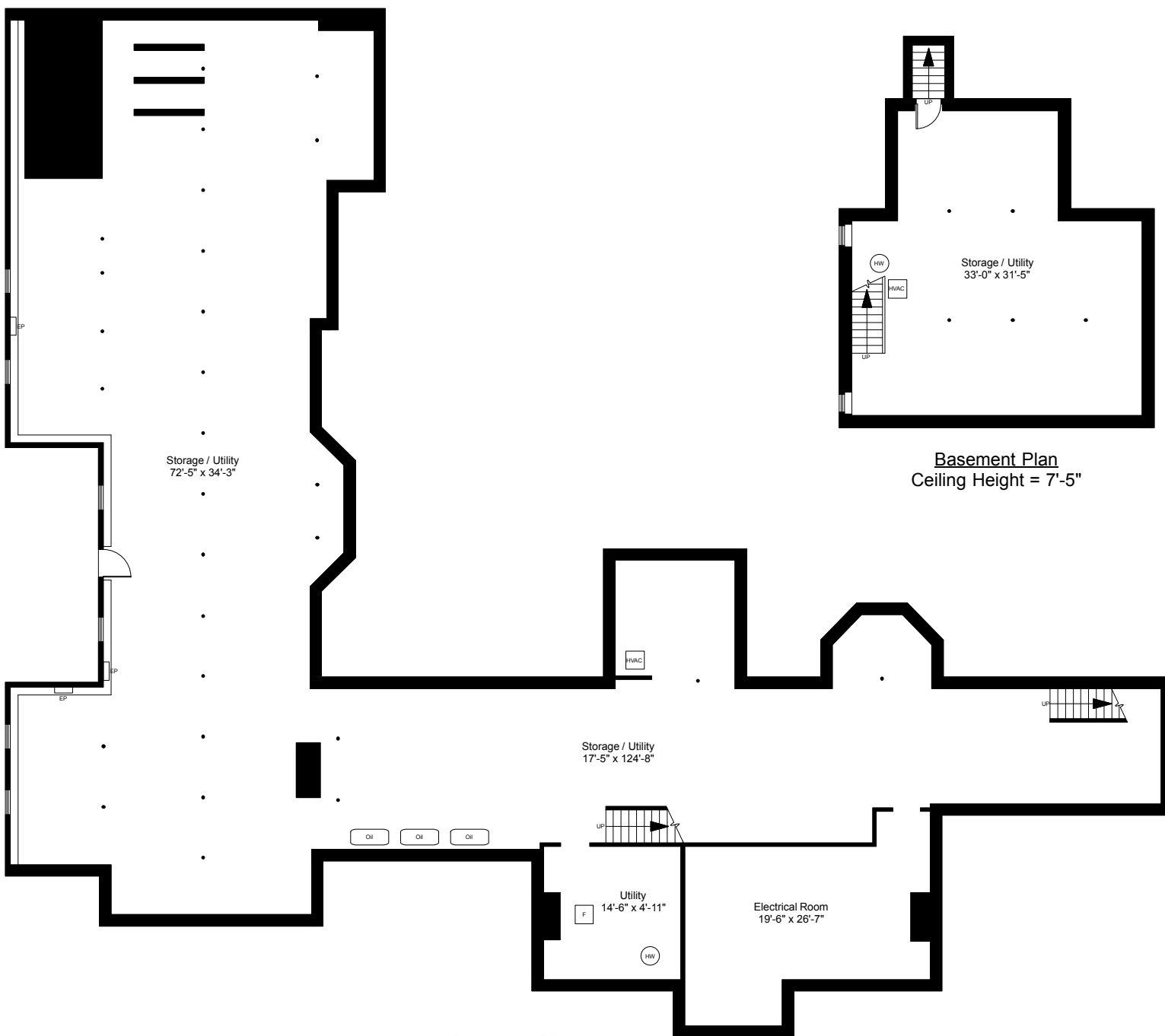
Completed: April 2019



Second Floor Plan
Ceiling Height = 8'-0"

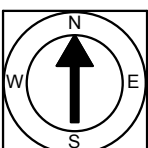
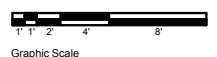


Third Floor Plan
Ceiling Height = 7'-8"



Basement Plan
Ceiling Height = 7'-8"

161 Pleasant Street
Norwell, MA 02061



Note: Dimensions are not guaranteed and are provided for informational purposes only. Individual room dimensions are not used to calculate overall square footage.